

The average time to get a correct diagnosis of NETs is

5-7  
YEARS<sup>1</sup>



Gastrointestinal NETs are the most common form of NETs, followed by pancreatic and lung NETs<sup>4</sup>

There are many misdiagnoses of NETs<sup>3</sup>

Here are some of the common ones<sup>5</sup>

- ✗ Crohn's Disease
- ✗ Irritable bowel syndrome (IBS)
- ✗ Menopause
- ✗ Gastritis



Men and women can both be affected<sup>2</sup>



Living with NETs  
Neuroendocrine tumours information & support

The average age of diagnosis is

50-60  
YEARS OLD<sup>2</sup>



Symptoms can occur in tandem<sup>3</sup>

Here are some common combinations

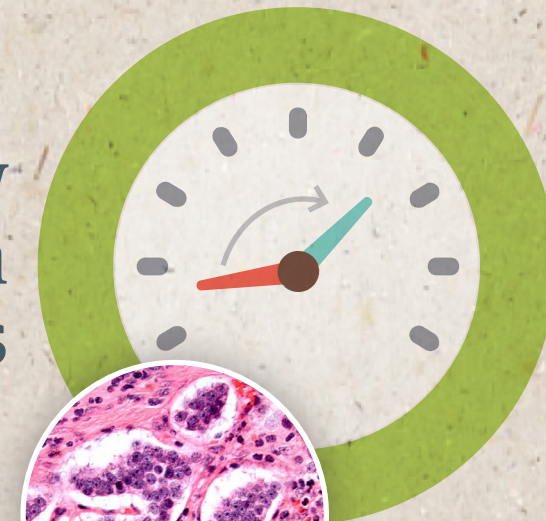
- Diarrhoea + Hot flushes
- Stomach cramps / Abdominal pain + Diarrhoea
- Wheezing + Abdominal pain
- Wheezing + Palpitations

# Did you know?

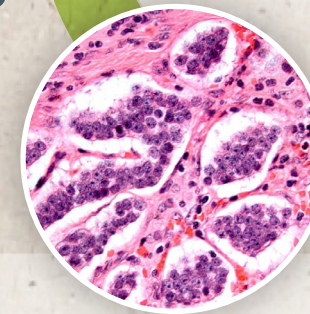
NETs are uncommon

ONLY 2%  
of all cancers<sup>3</sup>  
are diagnosed  
as NETs<sup>2</sup>

NETs can grow more slowly than many cancers



but they can also be very aggressive<sup>3,4</sup>



livingwithnets.com - the home of neuroendocrine tumours information and support

References: 1. Modlin IM, et al. J Natl Cancer Inst 2008;100(18):1282-89. 2. Oronsky B, et al. Neoplasia. 2017;19(12):991-1002. 3. Mamikunian G, et al. Neuroendocrine Tumors - 4th Edition. Inglewood, CA: Inter Science Institute; 2009. 4. Warner R. A review of carcinoid cancer. The Carcinoid Foundation. July 2012 (updated). <https://www.carcinoid.org/for-patients/general-information/a-review-of-carcinoid-cancer/>. Accessed May 2018. 5. NET Cancer Day. Why are NET cancers so often misdiagnosed? <http://netcancerday.org/learn-more/diagnosis-and-misdiagnosis-2/why-so-often-misdiagnosed/>. Accessed May 2018.